

Proposed Site Plan scale 1:250 @ A1

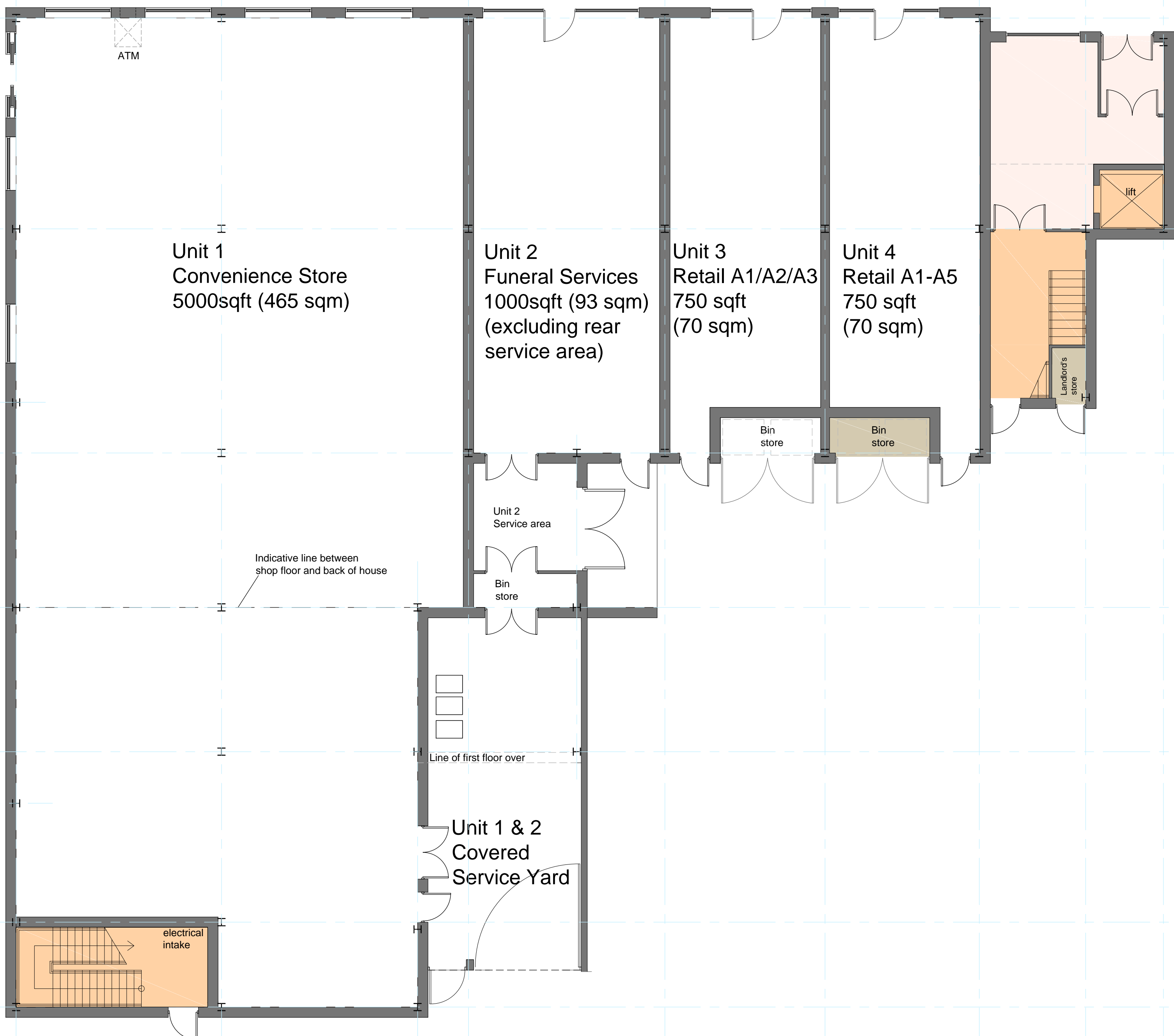


Rev	Date	Note						
1	03-06-15	PLANNING						
<div><div></div><div><div>West Hart Partnership Ltd Chartered Architects 5 Aldergate Tarnworth Sheffs B79 7DN 01827 671233 post@westhart.com www.westhart.com</div></div></div> <div><div>Client: LSP Developments Ltd</div><div>Project: Chelmond's Cross, Solihull Mixed Use Scheme</div><div>Drawing title: Proposed Site Plan</div><div><table><tr><td>Drawing number: 1107-110</td><td>Date of first issue: 03-06-15</td></tr><tr><td>Revision:</td><td>Scale / Paper size: 1:250 / A1</td></tr><tr><td></td><td>Drawn by / checked by: CC / JH</td></tr></table></div></div> <div><div><small>This drawing and the building works depicted are the copyright of West Hart Partnership Ltd and may not be reproduced except by written permission. This drawing must be read and checked against any specialist drawings and information provided. Do not scale from this drawing when using this for construction purposes, use figured dimensions only. © West Hart Partnership Ltd 2014</small></div></div>			Drawing number: 1107-110	Date of first issue: 03-06-15	Revision:	Scale / Paper size: 1:250 / A1		Drawn by / checked by: CC / JH
Drawing number: 1107-110	Date of first issue: 03-06-15							
Revision:	Scale / Paper size: 1:250 / A1							
	Drawn by / checked by: CC / JH							

Proposed Site Plan...



First Floor Plan
scale 1:100 @ A1



Ground Floor Plan
scale 1:100 @ A1

Areas Key:

- Office space: 814 sqm
- Circulation: 86 sqm
- Ancillary: 7 sqm

E	29.05.15	Steel grid and window positions to GF amended.
D	15.05.15	WC walls added.
C	07.05.15	Structural grid added.
B	06.05.15	Plans updated to suit elevations.
A	03.03.15	Plans updated to site plan
Rev	Date	Note

Status:
PLANNING



West Hart Partnership Ltd.
Chartered Architects
5 Aldergate,
Tamworth,
Staffs.
B79 7DJ
01827 67123
post@westhart.com
www.westhart.com

Client:
LSP Developments

Project:
**Chelmund's Cross, North Solihull
Mixed Use Scheme**
Drawing title:
Floor Plans

Drawing number: 1107-201	Date of first issue: 03-02-15
Revision: E	Scale / Paper size: 1:100 / A1
	Drawn by / checked by: CC / JH

This drawing and the building works depicted are the copyright of West Hart Partnership Ltd and may not be reproduced except by written permission. This drawing must be read and checked against any specialist drawings and information provided. Do not scale from this drawing when using this for construction purposes, use figured dimensions only.
© West Hart Partnership Ltd 2014



Proposed Mixed Use Development, Chelmund's Cross
 1107-301 Proposed Visual from Chester Road (for illustrative purposes only, Totem sign removed for clarity)

June 2015

West Hart Partnership Ltd
 5 Aldergate
 Tamworth
 Staffordshire
 B79 7DU

T: 01827 671231
 E: post@westhart.com
 W: www.westhart.com

